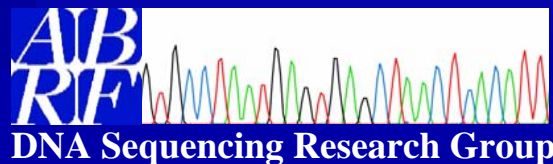


DNA Sequencing Research Group

DNA Sequencing Troubleshooting Web Resource

Peter Schweitzer, Debbie Adam, David Needleman, Michelle Detwiler, Helaman Escobar, Jan Kieleczawa, Rashmi Pershad, Glenis Wiebe, and Susan Hardin

Doug Hexter
World Design Group, Inc.



Overview

- **Designed for Facility Personnel**
 - Many of us have static troubleshooting pages on our websites. These are primarily designed to assist users, and primarily for template/primer problems. The DSRG DNA Sequencing Troubleshooting Web Resource is designed to do this, but also benefit facility personnel (i.e. it includes information on instrument errors in addition to template/chemistry problems).
- **Users Populate this Database**
 - The Web Resource contains records of problems (often with solutions) submitted by the public. It was designed to be flexible to keep up with new instruments, new chemistries, and new techniques.
- **This is a Problem-centric database**
 - Solutions are not needed to make a submission, and users may submit solutions to previously-submitted problems.


URL and links

- URL: <http://www.abrf.org/index.cfm/stwr.home>
- Linked from the ABRF DSRG web site

www.ABRF.org/DSRG

- Add a link from your own home page!

Front Page/Simple Search



The Association
of Biomolecular
Resource Facilities

Research • Technology
Communication • Education

Home | [ABRF Sponsors](#) | [Contact Us](#) | [Help](#)

[White Pages](#) | [Yellow Pages](#) | [Log In](#) | [Join ABRF](#)

Search

[Advanced Search](#)

[About ABRF](#)
[Forms and Documents](#)
[News and Announcements](#)
[Communications](#)
[Research Groups](#)
[Open Research Studies](#)
[Committees](#)
[Reference](#)
[Sponsorship](#)

[Flyout Menu Off](#)

DSRG Sequencing Troubleshooting Web Resource

[Home](#) | [Mission Statement](#) | [Glossary](#) | [DSRG Home](#) | [Contact DSRG](#) |

[[Advanced Search](#)] [[Browse All](#)] [[Browse By Category](#)] [[Submit New Problem](#)]

Welcome to the DSRG Sequencing Troubleshooting Web Resource.

Search the Troubleshooting Database

You may use the fields below to search for specific sequencing problems. Use any, all, or none of the criteria below to narrow your search. Leave all criteria fields blank to view the complete list.

Submission Age **Keyword(s)**

Problem Category

Sort By **Results Per Page**

[Home](#) | [ABRF Sponsors](#) | [Contact Us](#) | [Search](#)
[White Pages](#) | [Yellow Pages](#) | [Log In](#) | [Join ABRF](#)
[About ABRF](#) | [News and Announcements](#) | [Communications](#) | [Research Groups](#)
[Open Research Studies](#) | [Committees](#) | [Reference](#) | [Sponsorship](#)

© 1989-2006 ABRF. All rights reserved.
Site Design & Programming by [World Design Group, Inc.](#)

Front Page/Simple Search

The screenshot displays the front page of the DSRG Sequencing Troubleshooting Web Resource. At the top, the ABRF logo is on the left, and navigation links for Home, ABRF Sponsors, Contact Us, and Help are on the right. Below the logo, the text reads "The Association of Biomolecular Resource Facilities" and "Research • Technology, Communication • Education". A search bar with a "GO" button and a link to "Advanced Search" is located on the left. The main heading is "DSRG Sequencing Troubleshooting Web Resource", with a sub-heading "[Advanced Search]" circled in red. A navigation menu includes links for Home, Mission Statement, Glossary, DSRG Home, and Contact DSRG. A secondary menu offers "[Advanced Search]", "[Browse All]", "[Browse By Category]", and "[Submit New Problem]". The main content area welcomes users and provides instructions for searching the troubleshooting database. Search criteria include "Submission Age" (set to "Any"), "Keyword(s)", and "Problem Category". Sorting options are "Submission Date", "Asc. Order", and "Results Per Page" (set to 30). A "Search" button is at the bottom of the search form. The footer contains a comprehensive list of navigation links, copyright information for 1989-2006 ABRF, and credits for World Design Group, Inc.

Home | ABRF Sponsors | Contact Us | Help

White Pages | Yellow Pages | Log In | Join ABRF

Search GO

[Advanced Search](#)

DSRG Sequencing Troubleshooting Web Resource

[Home](#) | [Mission Statement](#) | [Glossary](#) | [DSRG Home](#) | [Contact DSRG](#) |

[\[Advanced Search\]](#) | [\[Browse All\]](#) | [\[Browse By Category\]](#) | [\[Submit New Problem\]](#)

Welcome to the DSRG Sequencing Troubleshooting Web Resource.

Search the Troubleshooting Database

You may use the fields below to search for specific sequencing problems. Use any, all, or none of the criteria below to narrow your search. Leave all criteria fields blank to view the complete list.

Submission Age **Keyword(s)**


Problem Category

Sort By **Results Per Page**

[Home](#) | [ABRF Sponsors](#) | [Contact Us](#) | [Search](#)
[White Pages](#) | [Yellow Pages](#) | [Log In](#) | [Join ABRF](#)
[About ABRF](#) | [News and Announcements](#) | [Communications](#) | [Research Groups](#)
[Open Research Studies](#) | [Committees](#) | [Reference](#) | [Sponsorship](#)

© 1989-2006 ABRF. All rights reserved.
Site Design & Programming by [World Design Group, Inc.](#)

Advanced Search



The Association
of Biomolecular
Resource Facilities

Home | [ABRF Sponsors](#) | [Contact Us](#) | [Help](#)

Research • Technology
Communication • Education

[White Pages](#) | [Yellow Pages](#) | [Log In](#) | [Join ABRF](#)

Search

[Advanced Search](#)

[About ABRF](#)
[Forms and Documents](#)
[News and Announcements](#)
[Communications](#)
[Research Groups](#)
[Open Research Studies](#)
[Committees](#)
[Reference](#)
[Sponsorship](#)

[Flyout Menu Off](#)

DSRG Sequencing Troubleshooting Web Resource

[Home](#) | [Mission Statement](#) | [Glossary](#) | [DSRG Home](#) | [Contact DSRG](#)

[[Search](#)] [[Browse All](#)] [[Browse By Category](#)] [[Submit New Problem](#)]

Advanced Database Search

You may use the fields below to search for specific sequencing problems. Use any, all, or none of the criteria below to narrow your search. Leave all criteria fields blank to view the complete list.

Some fields are only applicable if other fields are selected. Fields with **Gray Labels** aren't applicable to your current selections.
You may optionally use wildcards in text fields: * matches zero or more characters; ? matches one character;


Submission Age	<input type="text" value="Any"/>	Keyword(s)	<input type="text"/>
Problem Category	<input type="text"/>	Instrument Model	<input type="text"/>
Template Type	<input type="text"/>	Reaction Volume (µl)	<input type="text"/>
Sequence Chemistry	<input type="text"/>	Dye Volume (µl)	<input type="text"/>
Dilution Buffer	<input type="text"/>	Dilution Buffer Volume (µl)	<input type="text"/>
		Dilution Buffer Mfg	<input type="text"/>
Additive	<input type="text"/>	Additive Concentration (mM)	<input type="text"/>
		Additive Type	<input type="text"/>
		Additive Mfg	<input type="text"/>
Reaction Clean-up	<input type="text"/>	Resuspension/Loading in	<input type="text"/>

Sort By Results Per Page

[Home](#) | [ABRF Sponsors](#) | [Contact Us](#) | [Search](#)
[White Pages](#) | [Yellow Pages](#) | [Log In](#) | [Join ABRF](#)
[About ABRF](#) | [News and Announcements](#) | [Communications](#) | [Research Groups](#)
[Open Research Studies](#) | [Committees](#) | [Reference](#) | [Sponsorship](#)

© 1989-2006 ABRF. All rights reserved.
Site Design & Programming by [World Design Group, Inc.](#)

Advanced Search



The Association of Biomolecular Resource Facilities

Research • Technology
Communication • Education

Home | ABRF Sponsors | Contact Us | Help

White Pages | Yellow Pages | Log In | Join ABRF

Search

[Advanced Search](#)

[About ABRF](#)
[Forms and Documents](#)
[News and Announcements](#)
[Communications](#)
[Research Groups](#)
[Open Research Studies](#)
[Committees](#)
[Reference](#)
[Sponsorship](#)

[Flyout Menu Off](#)

DSRG Sequencing Troubleshooting Web Resource

[Home](#) | [Mission Statement](#) | [Glossary](#) | [DSRG Home](#) | [Contact DSRG](#)

[Search] [Browse All] [Browse By Category] [Submit New Problem]

Advanced Database Search

You may use the fields below to search for specific sequencing problems. Use any, all, or none of the criteria below to narrow your search. Leave all criteria fields blank to view the complete list.

Some fields are only applicable if other fields are selected. Fields with **Gray Labels** aren't applicable to your current selections. You may optionally use wildcards in text fields: * matches zero or more characters; ? matches one character.

Submission Age	<input type="text" value="Any"/>	Keyword(s)	<input type="text"/>
Problem Category	<input type="text"/>	Instrument Model	<input type="text"/>
Template Type	<input type="text"/>	Reaction Volume (µl)	<input type="text"/>
Sequence Chemistry	<input type="text"/>	Dye Volume (µl)	<input type="text"/>
Dilution Buffer	<input type="text"/>	Dilution Buffer Volume (µl)	<input type="text"/>
		Dilution Buffer Mfg	<input type="text"/>
Additive	<input type="text"/>	Additive Concentration (mM)	<input type="text"/>
		Additive Type	<input type="text"/>
		Additive Mfg	<input type="text"/>
Reaction Clean-up	<input type="text"/>	Resuspension/Loading in	<input type="text"/>


Sort By

- Amersham Biosci Alt/Alt Express
- Amersham Biosci MegaBACE 4000
- Amersham Biosci MegaBACE 500/1000
- Amersham Biosci MegaBACE 750/1500
- Applied Biosystems 310
- Applied Biosystems 3100
- Applied Biosystems 3130/3130xl
- Applied Biosystems 3700
- Applied Biosystems 373
- Applied Biosystems 3730/3730xl
- Applied Biosystems 377
- Beckman Coulter CEQ 2000/2000XL
- Beckman Coulter CEQ 8000
- Beckman Coulter CEQ 8800
- Li-Cor 4200 Series
- Li-Cor 4300 Series
- Other-capillary
- Other-slab gel
- SpectruMedix

[Home](#) | [ABRF Sponsors](#) | [Contact Us](#) | [Search](#)
[White Pages](#) | [Yellow Pages](#) | [Log In](#) | [Join ABRF](#)
[About ABRF](#) | [News and Announcements](#) | [Communications](#) | [Research Groups](#)
[Open Research Studies](#) | [Committees](#) | [Reference](#) | [Sponsorship](#)

© 1989-2006 ABRF. All rights reserved.
Site Design & Programming by [World Design Group, Inc.](#)

Front Page/Browse All

 **The Association of Biomolecular Resource Facilities**

Research • Technology
Communication • Education

Home | [ABRF Sponsors](#) | [Contact Us](#) | [Help](#)

[White Pages](#) | [Yellow Pages](#) | [Log In](#) | [Join ABRF](#)

Search

[Advanced Search](#)

DSRG Sequencing Troubleshooting Web Resource

[Home](#) | [Mission Statement](#) | [Glossary](#) | [DSRG Home](#) | [Contact DSRG](#) |

[[Advanced Search](#)] [[Browse All](#)] [[Browse By Category](#)] [[Submit New Problem](#)]

Welcome to the DSRG Sequencing Troubleshooting Web Resource.

Search the Troubleshooting Database

You may use the fields below to search for specific sequencing problems. Use any, all, or none of the criteria below to narrow your search. Leave all criteria fields blank to view the complete list.

Submission Age **Keyword(s)**

Problem Category

Sort By **Results Per Page**

[Home](#) | [ABRF Sponsors](#) | [Contact Us](#) | [Search](#)
[White Pages](#) | [Yellow Pages](#) | [Log In](#) | [Join ABRF](#)
[About ABRF](#) | [News and Announcements](#) | [Communications](#) | [Research Groups](#)
[Open Research Studies](#) | [Committees](#) | [Reference](#) | [Sponsorship](#)

© 1989-2006 ABRF. All rights reserved.
Site Design & Programming by [World Design Group, Inc.](#)

[Flyout Menu Off](#)

Browse All

 **The Association of Biomolecular Resource Facilities**

Research • Technology
Communication • Education

Home | [ABRF Sponsors](#) | [Contact Us](#) | [Help](#)

[White Pages](#) | [Yellow Pages](#) | [Log In](#) | [Join ABRF](#)

Search [GO](#)

[Advanced Search](#)

About ABRF
Forms and Documents
News and Announcements
Communications
Research Groups
Open Research Studies
Committees
Reference
Sponsorship

[Flyout Menu Off](#)

DSRG Sequencing Troubleshooting Web Resource


[Home](#) | [Mission Statement](#) | [Glossary](#) | [DSRG Home](#) | [Contact DSRG](#)

[[Search](#)] [[Advanced Search](#)] [[Refine Search](#)] [[Browse By Category](#)] [[Submit New Problem](#)]

Query Results Showing complete results (23)

View	Submit Date	Title	Category	Instrument	Template Type	Seq. Chem.
Q	02-Feb-05	Negative Baseline Values	Instrument Problem	Applied Biosystems 3730/3730xl	double stranded DNA	BigDye v3.1
Q	28-Feb-05	Loss of Peak Resolution	! Please Help !	Applied Biosystems 3730/3730xl	double stranded DNA	BigDye v1.1
Q	04-Mar-05	signal loss/G-stop	Sample Problem	Applied Biosystems 3730/3730xl	double stranded DNA	BigDye v3.1
Q	13-Mar-05	Base Calling - Poor Spacing	Sample Problem	Applied Biosystems 3730/3730xl	PCR product	BigDye v3.1
Q	12-Oct-05	autosampler failure	Instrument Problem	Applied Biosystems 3730/3730xl	N/A	N/A
Q	29-Nov-05	overlapping sequence in PCR product	Sample Problem	Applied Biosystems 3730/3730xl	PCR product	BigDye v3.1
Q	01-Dec-05	Homopolymer polyA with double peaks	Sample Problem	Applied Biosystems 3730/3730xl	double stranded DNA	BigDye v3.1
Q	04-Dec-05	Data spikes	Instrument Problem	Applied Biosystems 3730/3730xl	N/A	N/A
Q	04-Dec-05	hairpin	Sample Problem	Applied Biosystems 3730/3730xl	double stranded DNA	BigDye v3.1
Q	04-Dec-05	mixed population	Sample Problem	Applied Biosystems 3730/3730xl	double stranded DNA	BigDye v3.1
Q	04-Dec-05	secondary structure	Sample Problem	Applied Biosystems 3730/3730xl	double stranded DNA	BigDye v3.1
Q	04-Dec-05	signal drop out	! Please Help !	Applied Biosystems 3730/3730xl	PCR product	BigDye v3.1
Q	05-Dec-05	Homopolymer polyT sawtooth pattern	Sample Problem	Applied Biosystems 3730/3730xl	double stranded DNA	BigDye v3.1
Q	09-Dec-05	siRNA or hairpins	Sample Problem	Applied Biosystems 3130/3130xl	double stranded DNA	BigDye v3.1
Q	16-Dec-05	Low signal	Sample Problem	Beckman Coulter CEQ 8000	double stranded DNA	DTCS Beckman
Q	10-Jan-06	Dye Blobs with Big Dye version 3.1	Sample Problem	Applied Biosystems 3730/3730xl	double stranded DNA	BigDye v3.1
Q	13-Jan-06	Oven synchronization time out error	Instrument Problem	Applied Biosystems 3730/3730xl	N/A	N/A
Q	13-Jan-06	Autosampler Subsystem is busy	Instrument Problem	Applied Biosystems 3730/3730xl	N/A	N/A
Q	13-Jan-06	Z-motor subsystem assembly error	Instrument Problem	Applied Biosystems 3730/3730xl	N/A	N/A
Q	16-Jan-06	Bisulfite/GT-rich sequencing	Sample Problem	Applied Biosystems 3130/3130xl	double stranded DNA	BigDye v3.1
Q	16-Jan-06	Weaker signal at beginning of plate	Other	Applied Biosystems 3130/3130xl	double stranded DNA	BigDye v3.1
Q	16-Jan-06	Detection cell heater - nonfunctional	Instrument Problem	Applied Biosystems 3130/3130xl	double stranded DNA	BigDye v3.1
Q	18-Jan-06	Plasmid concentration	Sample Problem	Beckman Coulter CEQ 8000	double stranded DNA	DTCS Beckman

Browse All

 **The Association of Biomolecular Resource Facilities**

Research • Technology
Communication • Education

Home | [ABRF Sponsors](#) | [Contact Us](#) | [Help](#)

[White Pages](#) | [Yellow Pages](#) | [Log In](#) | [Join ABRF](#)

Search [GO](#)

[Advanced Search](#)

About ABRF

Forms and Documents

News and Announcements

Communications

Research Groups

Open Research Studies

Committees

Reference

Sponsorship

[Flyout Menu Off](#)

DSRG Sequencing Troubleshooting Web Resource

[Home](#) | [Mission Statement](#) | [Glossary](#) | [DSRG Home](#) | [Contact DSRG](#)

[Search] [Advanced Search] [Refine Search] [Browse By Category] [Submit New Problem]

Query Results Showing complete results (23)

Submit. Date	Title	Category	Instrument	Template Type	Seq. Chem.
2-Feb-05	Negative Baseline Values	Instrument Problem	Applied Biosystems 3730/3730xl	double stranded DNA	BigDye v3.1
28-Feb-05	Loss of Peak Resolution	! Please Help !	Applied Biosystems 3730/3730xl	double stranded DNA	BigDye v1.1
04-Mar-05	signal loss/G-stop	Sample Problem	Applied Biosystems 3730/3730xl	double stranded DNA	BigDye v3.1
13-Mar-05	Base Calling - Poor Spacing	Sample Problem	Applied Biosystems 3730/3730xl	PCR product	BigDye v3.1
12-Oct-05	autosampler failure	Instrument Problem	Applied Biosystems 3730/3730xl	N/A	N/A
29-Nov-05	overlapping sequence in PCR product	Sample Problem	Applied Biosystems 3730/3730xl	PCR product	BigDye v3.1
01-Dec-05	Homopolymer polyA with double peaks	Sample Problem	Applied Biosystems 3730/3730xl	double stranded DNA	BigDye v3.1
04-Dec-05	Data spikes	Instrument Problem	Applied Biosystems 3730/3730xl	N/A	N/A
04-Dec-05	hairpin	Sample Problem	Applied Biosystems 3730/3730xl	double stranded DNA	BigDye v3.1
04-Dec-05	mixed population	Sample Problem	Applied Biosystems 3730/3730xl	double stranded DNA	BigDye v3.1
04-Dec-05	secondary structure	Sample Problem	Applied Biosystems 3730/3730xl	double stranded DNA	BigDye v3.1
04-Dec-05	signal drop out	! Please Help !	Applied Biosystems 3730/3730xl	PCR product	BigDye v3.1
05-Dec-05	Homopolymer polyT sawtooth pattern	Sample Problem	Applied Biosystems 3730/3730xl	double stranded DNA	BigDye v3.1
09-Dec-05	siRNA or hairpins	Sample Problem	Applied Biosystems 3130/3130xl	double stranded DNA	BigDye v3.1
16-Dec-05	Low signal	Sample Problem	Beckman Coulter CEQ 8000	double stranded DNA	DTCS Beckman
10-Jan-06	Dye Blobs with Big Dye version 3.1	Sample Problem	Applied Biosystems 3730/3730xl	double stranded DNA	BigDye v3.1
13-Jan-06	Oven synchronization time out error	Instrument Problem	Applied Biosystems 3730/3730xl	N/A	N/A
13-Jan-06	Autosampler Subsystem is busy	Instrument Problem	Applied Biosystems 3730/3730xl	N/A	N/A
13-Jan-06	Z-motor subsystem assembly error	Instrument Problem	Applied Biosystems 3730/3730xl	N/A	N/A
16-Jan-06	Bisulfite/GT-rich sequencing	Sample Problem	Applied Biosystems 3130/3130xl	double stranded DNA	BigDye v3.1
16-Jan-06	Weaker signal at beginning of plate	Other	Applied Biosystems 3130/3130xl	double stranded DNA	BigDye v3.1
16-Jan-06	Detection cell heater - nonfunctional	Instrument Problem	Applied Biosystems 3130/3130xl	double stranded DNA	BigDye v3.1
18-Jan-06	Plasmid concentration	Sample Problem	Beckman Coulter CEQ 8000	double stranded DNA	DTCS Beckman

- [About ABRF](#)
- [Forms and Documents](#)
- [News and Announcements](#)
- [Communications](#)
- [Research Groups](#)
- [Open Research Studies](#)
- [Committees](#)
- [Reference](#)
- [Sponsorship](#)

[Flyout Menu Off](#)

View Submission Details

Problem Information

Problem Title	Negative Baseline Values
Problem Category	Instrument Problem
Problem Description	This particular sample was run in H01, and the overall signal is quite low. The analyzed data looks o.k., but if you look at the raw data, you will see that the black baseline is quite low relative to the others. All samples that ran in the odd numbered rows ie. the first injection looked like this (although not always this extreme). The samples in the even rows (second injection) are fine - normal baseline, normal signal strength. This is only one example of what we have seen many times, even in runs with only water (no samples), only formamide, sequencing standard plates, etc. etc.
Trace or Image File	9_83Negative_Baseline.gif
File Format	gif
Problem Frequency	Recurring-all runs
Samples Affected	All samples + controls
Problem Solution	Our Applied Biosystems Service Engineer installed a Pre-Batch Module that allows the laser to warm up longer before the first run. This problem has not reappeared since then.

Instrument Details

Instrument Model	Applied Biosystems 3730/3730xl
Capillary Length (cm)	50
Capillary Mfg	AB
Polymer	POP-7
Polymer Mfg	AB
Running Buffer	3730 Running Buffer w/ EDTA - 1X
Running Buffer Mfg	ab
Run Module	Default Run Module

Sequencing Reaction

Template Type	double stranded DNA
Primer Amount per reaction (pmol)	5
Reaction Volume (µl)	10
Sequence Chemistry	BigDye v3.1
Dye Volume (µl)	1
Dilution Buffer	Yes
Dilution Buffer Volume (µl)	2
Dilution Buffer Mfg	Applied Biosystems
Additive	No
Reaction Vessel	Individual or Strip Tube

- [About ABRF](#)
- [Forms and Documents](#)
- [News and Announcements](#)
- [Communications](#)
- [Research Groups](#)
- [Open Research Studies](#)
- [Committees](#)
- [Reference](#)
- [Sponsorship](#)

[Flyout Menu Off](#)

View Submission Details

Problem Information

Problem Title	Negative Baseline Values
Problem Category	Instrument Problem
Problem Description	This particular sample was run in H01, and the overall signal is quite low. The analyzed data looks o.k., but if you look at the raw data, you will see that the black baseline is quite low relative to the others. All samples that ran in the odd numbered rows ie. the first injection looked like this (although not always this extreme). The samples in the even rows (second injection) are fine - normal baseline, normal signal strength. This is only one example of what we have seen many times, even in runs with only water (no samples), only formamide, sequencing standard plates, etc. etc.
Trace or Image File	9_83Negative_Baseline.gif
File Format	gif
Problem Frequency	Recurring-all runs
Samples Affected	All samples + controls
Problem Solution	Our Applied Biosystems Service Engineer installed a Pre-Batch Module that allows the laser to warm up longer before the first run. This problem has not reappeared since then.

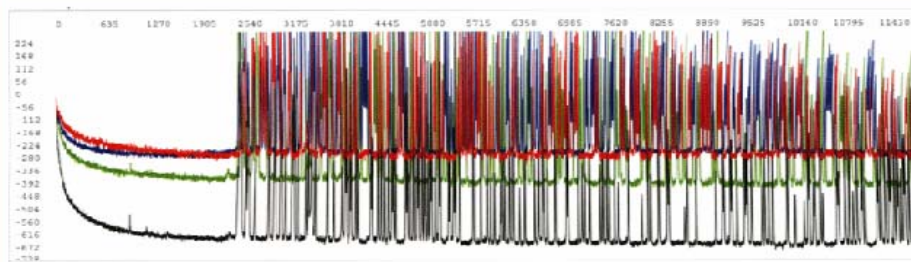
To view or download image

Instrument Details

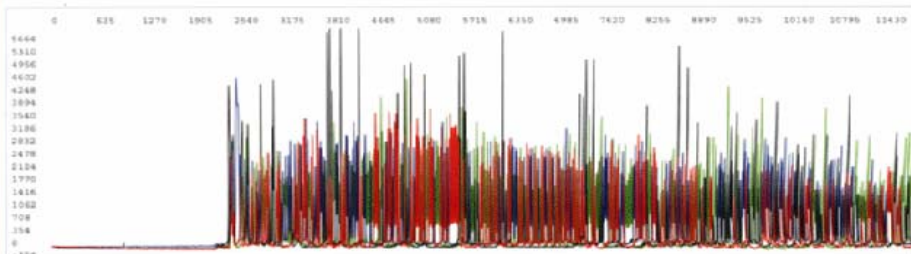
Instrument Model	Applied Biosystems 3730/3730xl
Capillary Length (cm)	50
Capillary Mfg	AB
Polymer	POP-7
Polymer Mfg	AB
Running Buffer	3730 Running Buffer w/ EDTA - 1X
Running Buffer Mfg	ab
Run Module	Default Run Module

Sequencing Reaction

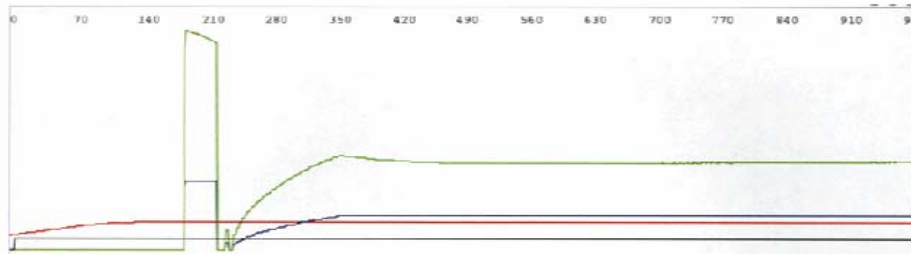
Template Type	double stranded DNA
Primer Amount per reaction (pmol)	5
Reaction Volume (µl)	10
Sequence Chemistry	BigDye v3.1
Dye Volume (µl)	1
Dilution Buffer	Yes
Dilution Buffer Volume (µl)	2
Dilution Buffer Mfg	Applied Biosystems
Additive	No
Reaction Vessel	Individual or Strip Tube



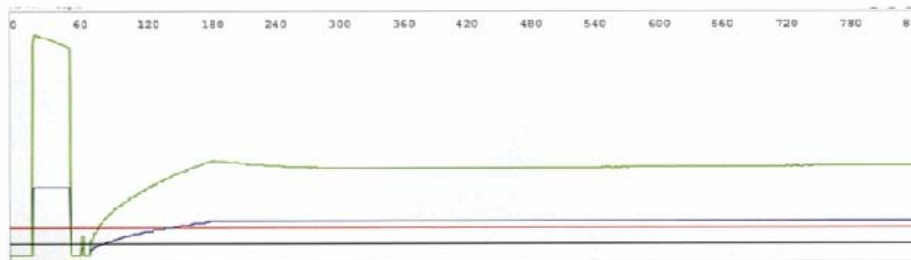
Example of a sample run in an odd-numbered lane (H01) on a 3730 (48-capillary) prior to Pre-Batch Module installation.



Compare this to a sample run in an even-numbered lane (H02).



EPT of the first sample (odd-numbered lane).



EPT of the sample run in the even-numbered lane.

- [About ABRF](#)
- [Forms and Documents](#)
- [News and Announcements](#)
- [Communications](#)
- [Research Groups](#)
- [Open Research Studies](#)
- [Committees](#)
- [Reference](#)
- [Sponsorship](#)

[Flyout Menu Off](#)

View Submission Details

Problem Information

Problem Title	Negative Baseline Values
Problem Category	Instrument Problem
Problem Description	This particular sample was run in H01, and the overall signal is quite low. The analyzed data looks o.k., but if you look at the raw data, you will see that the black baseline is quite low relative to the others. All samples that ran in the odd numbered rows ie. the first injection looked like this (although not always this extreme). The samples in the even rows (second injection) are fine - normal baseline, normal signal strength. This is only one example of what we have seen many times, even in runs with only water (no samples), only formamide, sequencing standard plates, etc. etc.
Trace or Image File	9_83Negative_Baseline.gif
File Format	gif
Problem Frequency	Recurring-all runs
Samples Affected	All samples + controls
Problem Solution	Our Applied Biosystems Service Engineer installed a Pre-Batch Module that allows the laser to warm up longer before the first run. This problem has not reappeared since then.



Problem Solution

Instrument Details

Instrument Model	Applied Biosystems 3730/3730xl
Capillary Length (cm)	50
Capillary Mfg	AB
Polymer	POP-7
Polymer Mfg	AB
Running Buffer	3730 Running Buffer w/ EDTA - 1X
Running Buffer Mfg	ab
Run Module	Default Run Module

Sequencing Reaction

Template Type	double stranded DNA
Primer Amount per reaction (pmol)	5
Reaction Volume (µl)	10
Sequence Chemistry	BigDye v3.1
Dye Volume (µl)	1
Dilution Buffer	Yes
Dilution Buffer Volume (µl)	2
Dilution Buffer Mfg	Applied Biosystems
Additive	No
Reaction Vessel	Individual or Strip Tube

Running Buffer 3730 Running Buffer w/ EDTA - 1X
Running Buffer Mfg ab
Run Module Default Run Module

Sequencing Reaction

Template Type double stranded DNA
Primer Amount per reaction (pmol) 5
Reaction Volume (µl) 10
Sequence Chemistry BigDye v3.1
Dye Volume (µl) 1
Dilution Buffer Yes
Dilution Buffer Volume (µl) 2
Dilution Buffer Mfg Applied Biosystems
Additive No
Reaction Vessel Individual or Strip Tube

Post-sequencing Reaction

Reaction Clean-up Gel Filtration
Dried Down & Resuspended No
Resuspension/Loading in Water
Denaturation No

Comments

Please note that your comment should be relevant and in good taste, will be curated and possibly edited by the DSRG, and it may not be added to the permanent record.

Add Comment

Submit Comment

Add comment or suggest a solution

Front Page



The Association
of Biomolecular
Resource Facilities

Research • Technology
Communication • Education

Home | [ABRF Sponsors](#) | [Contact Us](#) | [Help](#)

[White Pages](#) | [Yellow Pages](#) | [Log In](#) | [Join ABRF](#)

Search

[Advanced Search](#)

[About ABRF](#)
[Forms and Documents](#)
[News and Announcements](#)
[Communications](#)
[Research Groups](#)
[Open Research Studies](#)
[Committees](#)
[Reference](#)
[Sponsorship](#)

[Flyout Menu Off](#)

DSRG Sequencing Troubleshooting Web Resource

[Home](#) | [Mission Statement](#) | [Glossary](#) | [DSRG Home](#) | [Contact DSRG](#) |

[\[Advanced Search\]](#) | [\[Browse All\]](#) | [\[Browse By Category\]](#) | [\[Submit New Problem\]](#)

Welcome to the DSRG Sequencing Troubleshooting Web Resource.

Search the Troubleshooting Database

You may use the fields below to search for specific sequencing problems. Use any, all, or none of the criteria below to narrow your search. Leave all criteria fields blank to view the complete list.

Submission Age **Keyword(s)**

Problem Category

Sort By **Results Per Page**

[Home](#) | [ABRF Sponsors](#) | [Contact Us](#) | [Search](#)
[White Pages](#) | [Yellow Pages](#) | [Log In](#) | [Join ABRF](#)
[About ABRF](#) | [News and Announcements](#) | [Communications](#) | [Research Groups](#)
[Open Research Studies](#) | [Committees](#) | [Reference](#) | [Sponsorship](#)

© 1989-2006 ABRF. All rights reserved.
Site Design & Programming by [World Design Group, Inc.](#)

New Problem Submission

[About ABRF](#)
[Forms and Documents](#)
[News and Announcements](#)
[Communications](#)
[Research Groups](#)
[Open Research Studies](#)
[Committees](#)
[Reference](#)
[Sponsorship](#)

[Flyout Menu Off](#)

New Problem Submission

Please complete the following form to submit your sequencing problem/solution to us. Provide as much detail as possible.

Red fields are required. **Black fields** are optional. **Gray fields** are not applicable (based on your other selections).

Submitter Information

Information in this section will NOT be viewable by users. This info is only for the DSRG and may be used during the curation process.

Last Name

First Name

Email Address

Address

Problem Information

Problem Title

Problem Category

Problem Description

Trace or Image File

File Format

Problem Frequency

How Sporadic

Samples Affected

Problem Solution

New Problem Submission

About ABRF
Forms and Documents
News and Announcements
Communications
Research Groups
Open Research Studies
Committees
Reference
Sponsorship

Flyout Menu Off

New Problem Submission

Please complete the following form to submit your sequencing problem/solution to us. Provide as much detail as possible.

Red fields are required. **Black fields** are optional. **Gray fields** are not applicable (based on your other selections).

Submitter Information

Information in this section **will NOT** be viewable by users. This info is only for the DSRG and may be used during the curation process.

Last Name

First Name

Email Address

Address

Problem Information

Problem Title

Problem Category

Problem Description

Trace or Image File

File Format

Problem Frequency

How Sporadic

Samples Affected

Problem Solution

We do require this,
though this information is
not made public

New Problem Submission

About ABRF
[Forms and Documents](#)
[News and Announcements](#)
[Communications](#)
[Research Groups](#)
[Open Research Studies](#)
[Committees](#)
[Reference](#)
[Sponsorship](#)

[Flyout Menu Off](#)

New Problem Submission

Please complete the following form to submit your sequencing problem/solution to us. Provide as much detail as possible.

Red fields are required. **Black fields** are optional. **Gray fields** are not applicable (based on your other selections).

Submitter Information

Information in this section will NOT be viewable by users. This info is only for the DSRG and may be used during the curation process.

Last Name

First Name

Email Address

Address

Problem Information

Problem Title

Problem Category

Problem Description

Trace or Image File

File Format

Problem Frequency

How Sporadic

Samples Affected

Problem Solution

This is the field searched by the Keyword search

New Problem Submission

[About ABRF](#)
[Forms and Documents](#)
[News and Announcements](#)
[Communications](#)
[Research Groups](#)
[Open Research Studies](#)
[Committees](#)
[Reference](#)
[Sponsorship](#)

[Flyout Menu Off](#)

New Problem Submission

Please complete the following form to submit your sequencing problem/solution to us. Provide as much detail as possible.

Red fields are required. **Black fields** are optional. **Gray fields** are not applicable (based on your other selections).

Submitter Information

Information in this section will NOT be viewable by users. This info is only for the DSRG and may be used during the curation process.

Last Name

First Name

Email Address

Address

Problem Information

Problem Title

Problem Category

Problem Description

Trace or Image File

File Format

Problem Frequency

How Sporadic

Samples Affected

Problem Solution

Browse to upload your image file (if necessary)

New Problem Submission

[About ABRF](#)
[Forms and Documents](#)
[News and Announcements](#)
[Communications](#)
[Research Groups](#)
[Open Research Studies](#)
[Committees](#)
[Reference](#)
[Sponsorship](#)

[Flyout Menu Off](#)

New Problem Submission

Please complete the following form to submit your sequencing problem/solution to us. Provide as much detail as possible.

Red fields are required. **Black fields** are optional. **Gray fields** are not applicable (based on your other selections).

Submitter Information

Information in this section will NOT be viewable by users. This info is only for the DSRG and may be used during the curation process.

Last Name

First Name

Email Address

Address

Problem Information

Problem Title

Problem Category

Problem Description

Trace or Image File

File Format

Problem Frequency

How Sporadic

Samples Affected

Problem Solution

Only other required fields are:

- Instrument model
- Template type (N/A is option)
- Sequencing chemistry (N/A is option)

Curation by the DSRG

- DSRG receives an email when submission is made—the record is designated “pending” and not made public.
- The DSRG will examine each record to determine whether to:
 - Remove identifying information (e.g. from the .ab1 file)
 - Reformat image file (usually to .pdf)
 - Collect additional information and or additional images/data from the submitter that we feel is needed to complete the record
 - Make the Record Public

Final Request

- This database will only be as good as the submissions (and solutions) received.
- Please submit your problems. Don't be concerned that they may be redundant with others we have. We, the DSRG, will determine if yours is a better example, or is not needed. We'd rather have too many submissions than too few!
- Remember—you don't need a solution to submit a problem!