

ABRF Core Administrators Network Survey: Developing a Database of Core Administrators

Susan Meyn, Philip Hockberger, Paula Turpen, Connie Nicklin, Diane Tabarini,
George Grills[#] and Karen Jonscher[#]

Core Administrators Network Coordinating Committee (CAN-CC) and Executive Board Members[#], ABRF

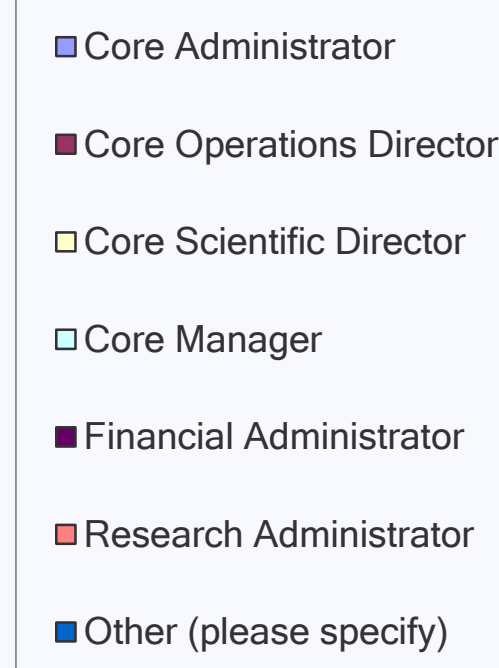
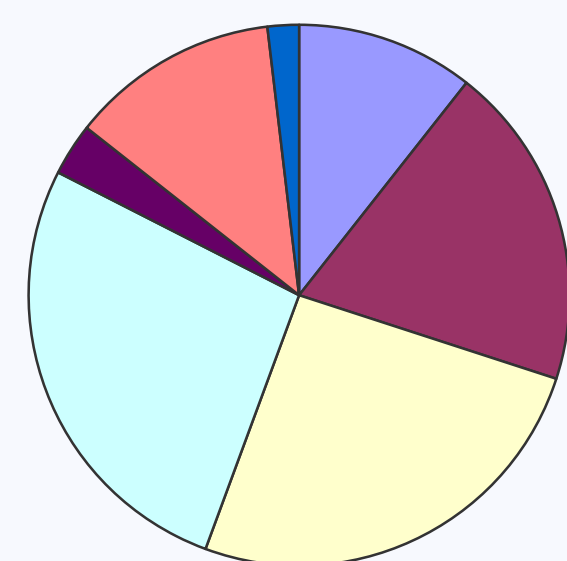


Abstract

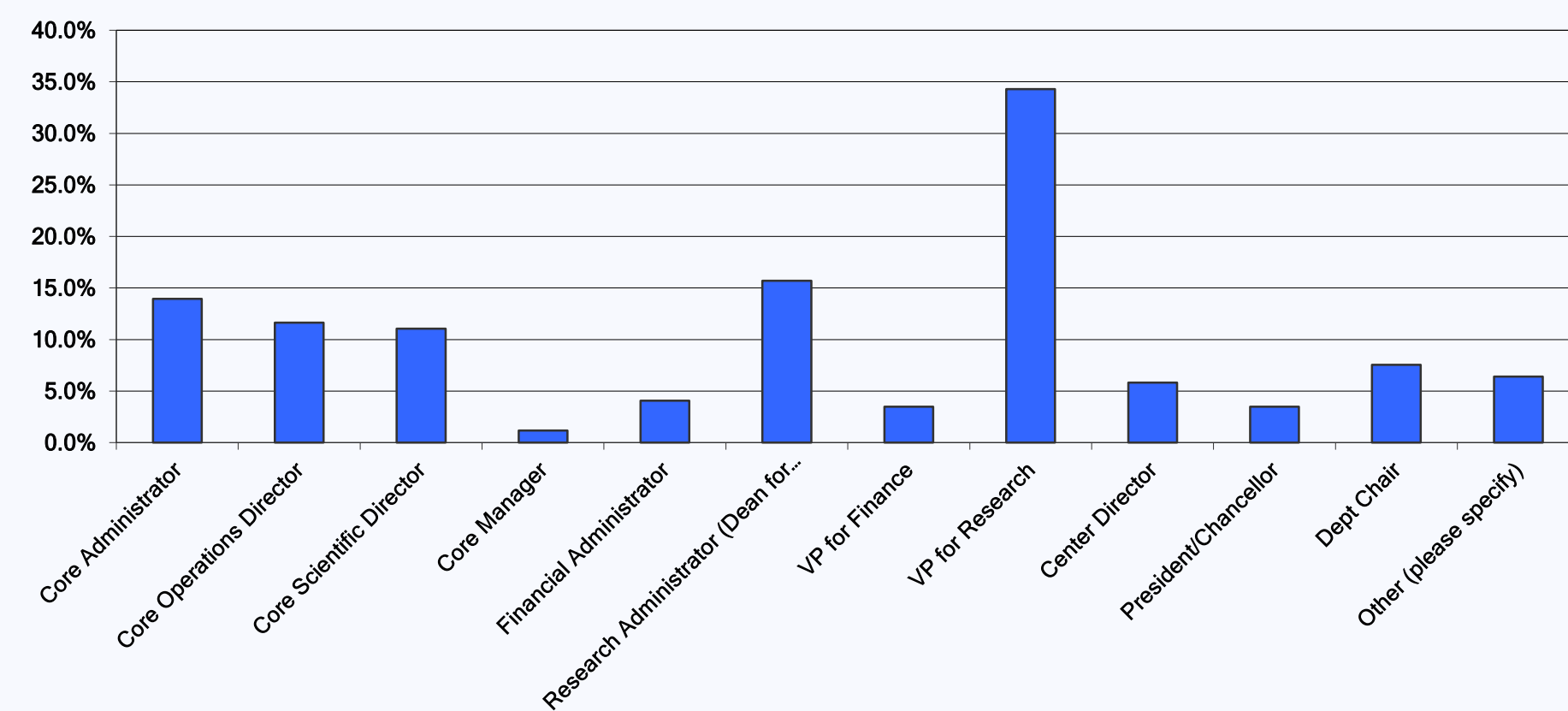
CAN-CC was established by the ABRF in 2010 to facilitate greater interaction among core scientists and administrators and with the goal of creating a set of references, procedures and best practices for institutions engaged in core facility management and oversight. In particular, we seek to develop a database of core administrators, identify and describe core management model systems, and identify, collect and describe tools for core administration. Here we summarize results from our first survey, representing responses from 172 individuals from 79 institutions, that investigates the demographics of core facility management/administration and overall factors common to most cores.

1. Responders Information

What Job Title best describes your role?

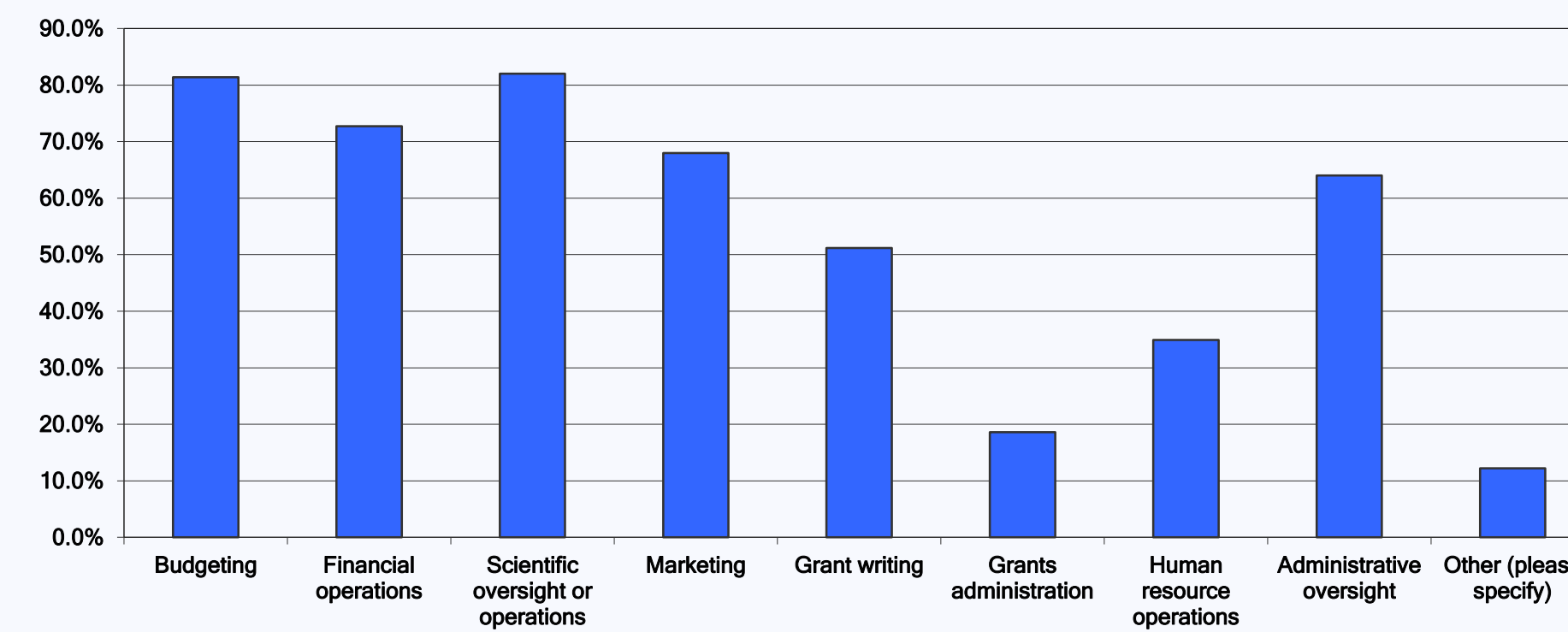


To what position do you report? Select all that apply:



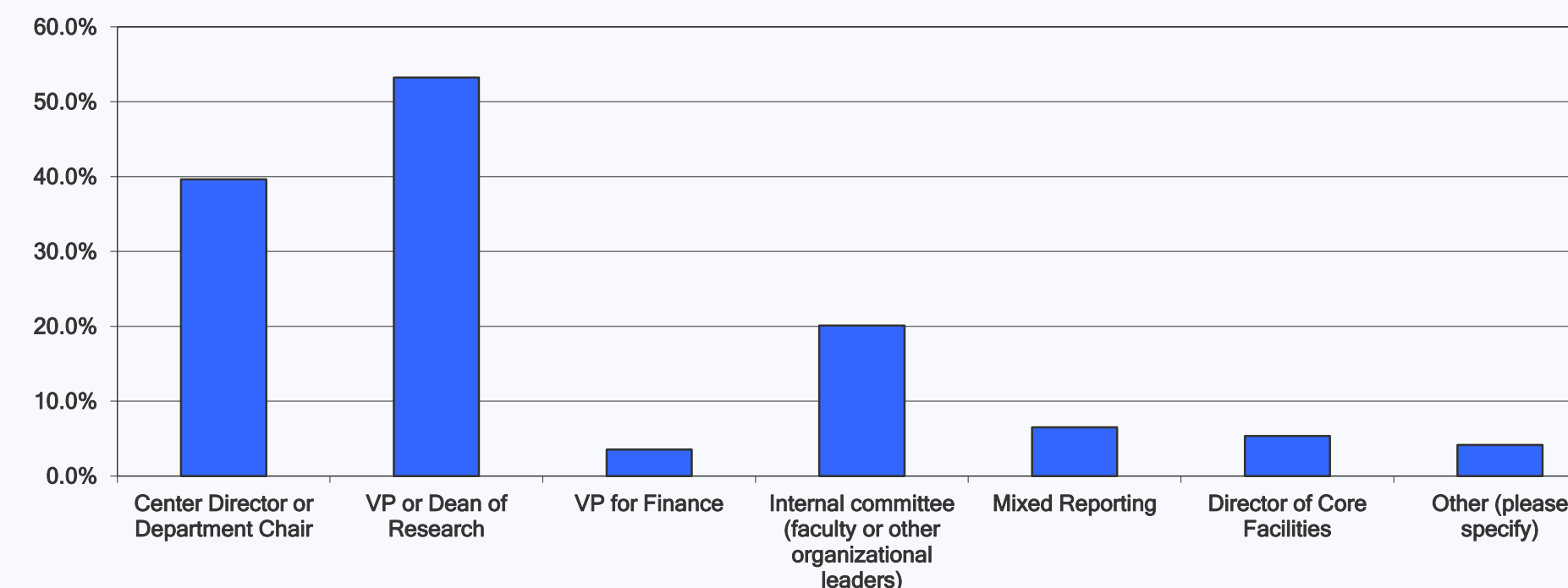
2. Job Responsibilities

What are your responsibilities in relation to research core facilities? Select all that apply:

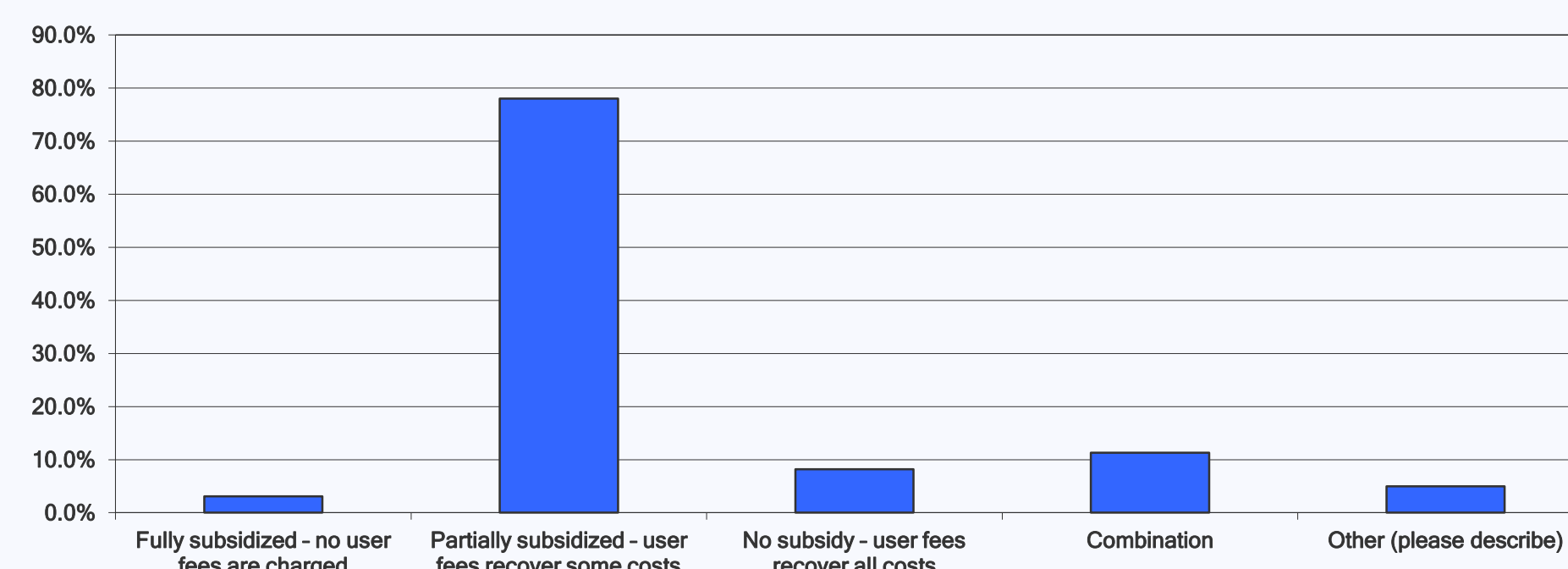


3. Institutional Structure

Who do the cores at your organization report to?

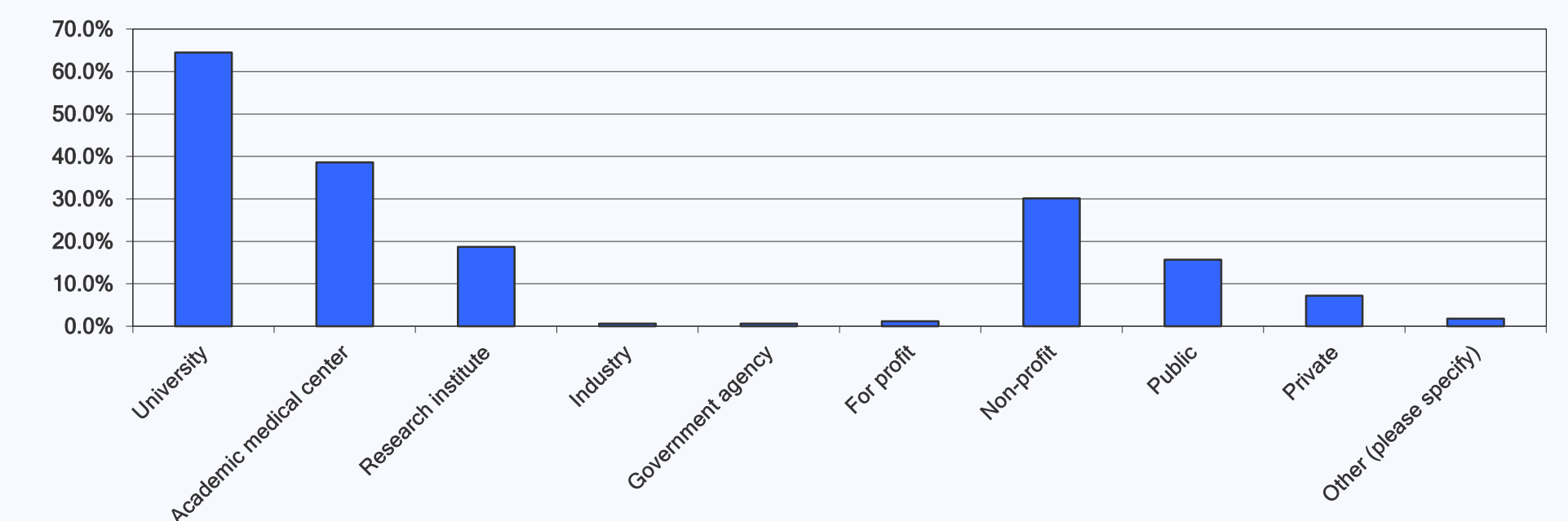


If you are a core director/manager, what is the business model for your core or cores?

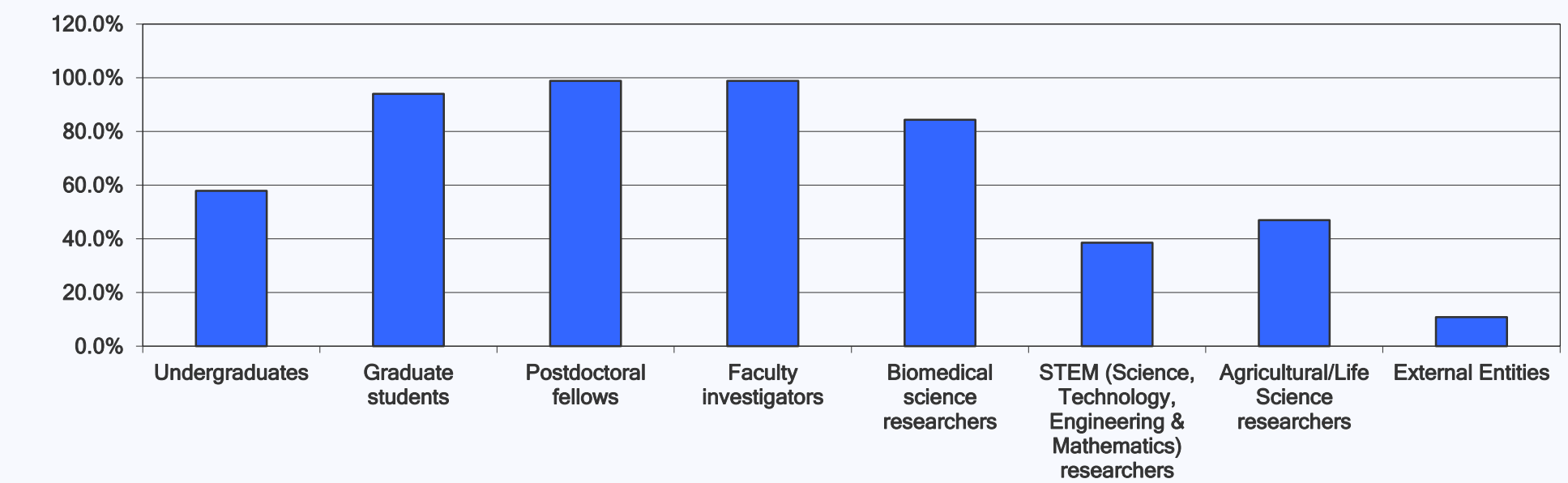


4. Type of Institution

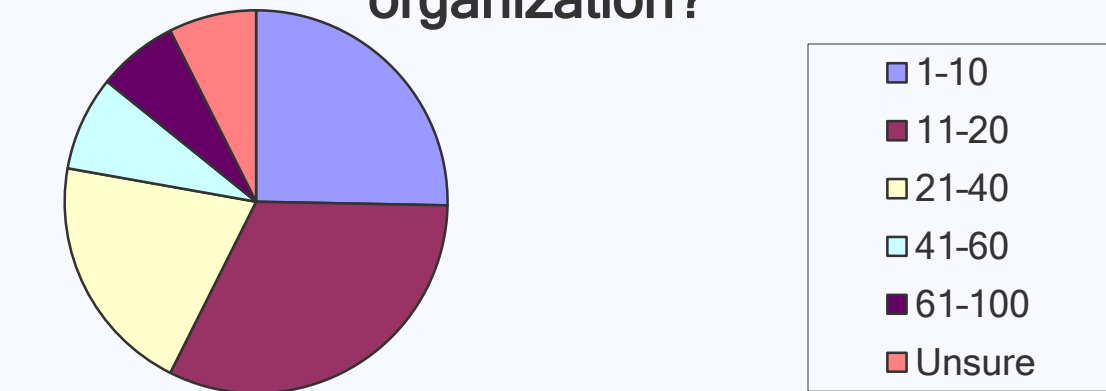
What type of organization do you work for? Select all that apply:



What type of user groups do your core facilities serve? Select all that apply:



Approximately how many core facilities are there at your organization?



5. External Support

What are the sources of funding for research core facilities at your organization? Select all that apply:

